



# Port-A-Bell® Cases

## High-Density Polyethylene Rolling Pull Handle Cases

- Recessed Hardware
- Molded-in ribs and bumpers
- Three-stage telescoping recessed pull handle
- Recessed spring-loaded handles on three sides for lifting
- Full length piano hinge
- Precision Custom-cut foam insert
- Closed cell foam does not absorb moisture so bells will not tarnish
- ATA compliant, intended for any travel, including airlines
- Lock Rings for TSA Locks
- Lighter weight and more portable than your current case



## Handbell Cases

- 1st octave Case..... \$599 (C5-C6)
- 2nd octave Case ..... \$599 (G4-B4 & C#6-G6)
- 3rd octave Case..... \$625 (C4-F#4 & G#6-C7)
- 4th octave Case..... \$625 (G3-B3 & C#7-G7)
- 5th octave Case 1 ..... \$650 (C3-D3)
- 5th octave Case 2 ..... \$650 (D#3-F#3 & G#7-C8)

## Specialty Cases

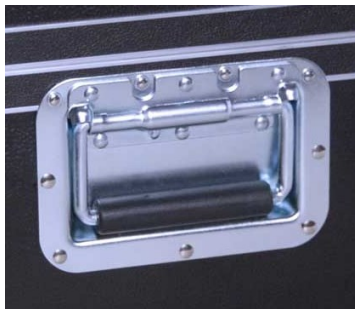
- Solo Ringer Case..... \$895 (G4-G7)
- Solo High Case ..... \$850 (C5-C8)

## Choirchime® Cases

- 1st & 2nd octaves ..... \$399 (G4-G6)
- 3rd octave..... \$375 (C4-F#4 & G#6-C7))
- 4th octave..... \$375 (G3-B3 & C#7-G7)
- 5th octave Case 1 ..... \$399 (C3-D3 & G#7-C8)
- 5th octave Case 2 ..... \$375 (D#3-F#3)
- 6th octave Case 1 ..... \$399 (G2-A2)
- 6th octave Case 2 ..... \$399 (A#2-B2)



## Recessed Handles and Twist Latches



## 2" Ballbearing Recessed Inline Skate Wheels

*Add shipping charges  
and applicable taxes.*

**Warranty Information:** The manufacturer offers a three year warranty on the case. The foam packs (on the inside) have a one year warranty. Foam can be replaced if needed. With normal wear the foam pack should last approximately ten years. The case is water resistant (not waterproof). The tongue-in-groove seat on the cases will prevent moisture from entering for a short time (ex. moving from the car to the building), but cannot be depended upon to protect bells if left outside for extended periods of time. 1/17